

South Midlands Careers Hub

Inclusion Community of Practice
Thursday 05.03.2026

Sarah Latimer
Careers Consultant for
Inclusion/SEND



Welcome everyone

Introduction time!



Name



School



Biggest wins

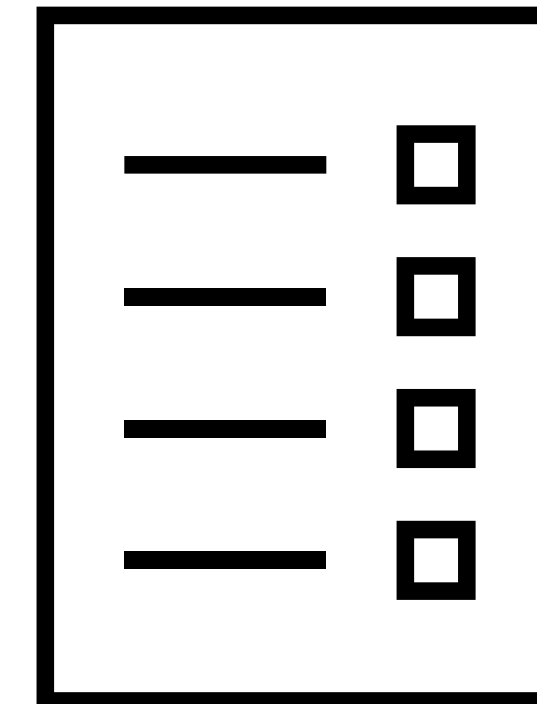


Challenges

Aim and Agenda

Today we're exploring what Modern Work Experience means for schools and students with SEND, how it links to PfA outcomes, and why it matters for FE SEND Departments too

- Modern Work Experience and national context
- Links to Preparing for Adulthood
- Discussion – pivoting the work experience offer
- Spotlight – Lesley Chattaway, Isebrook School
- Provider spotlight – Isla Norwood, MK College



Poll!

Modern Work Experience

South Midlands
CAREERS HUB

THE CAREERS &
ENTERPRISE
COMPANY

A minimum of two weeks' worth of work experience by Year 11, made up of:

- At least one week of **work experience activities** in Years 7–9
- At least one week of **placements** in Years 10–11

Access for all learners, regardless of background, **ensuring equitable participation**

Flexibility for schools, learners, and employers to design experiences that meet local and individual needs

Modern Work Experience

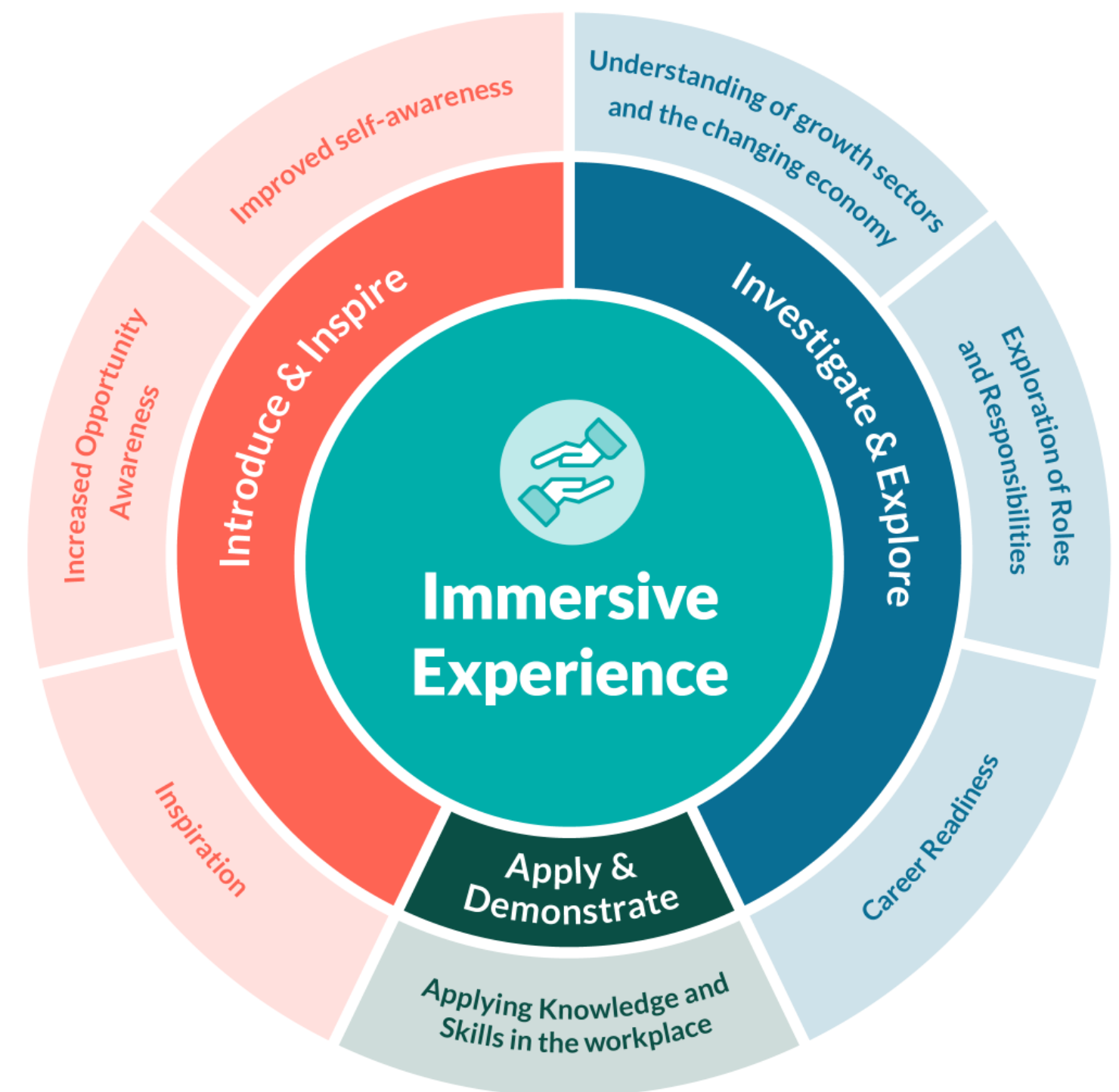


Modern Work Experience: National Picture

- Schools have been *planning for implementation* and *reforming* their work experience programmes
- Regional Careers Hubs offering targeted support
- Equalex Framework
- Employer Campaigns – including SME's

Statutory Guidance - [Careers guidance and access for education and training providers - GOV.UK](#)

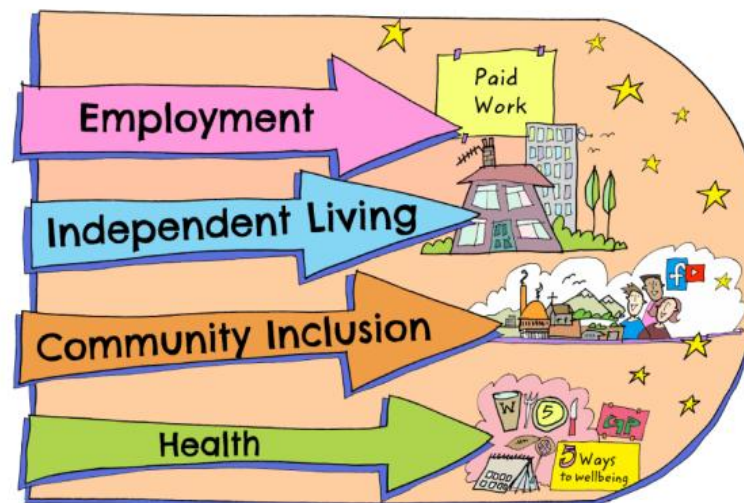
Equalex Framework



Modern Work Experience and PfA

Employment, Education & Training

- Multiple, progressive workplace experiences for young people to explore roles/industries/pathways
- Activities underpinned by LO's and employer-led in design support skills development
- Builds employability skills
- Progressive approach supports building skills over time



Community Inclusion

- Opportunities to interact with wide range of adults and peers
- Community-based experiences encourage social contribution
- Encourages young people to engage with local community and industry

Independent Living

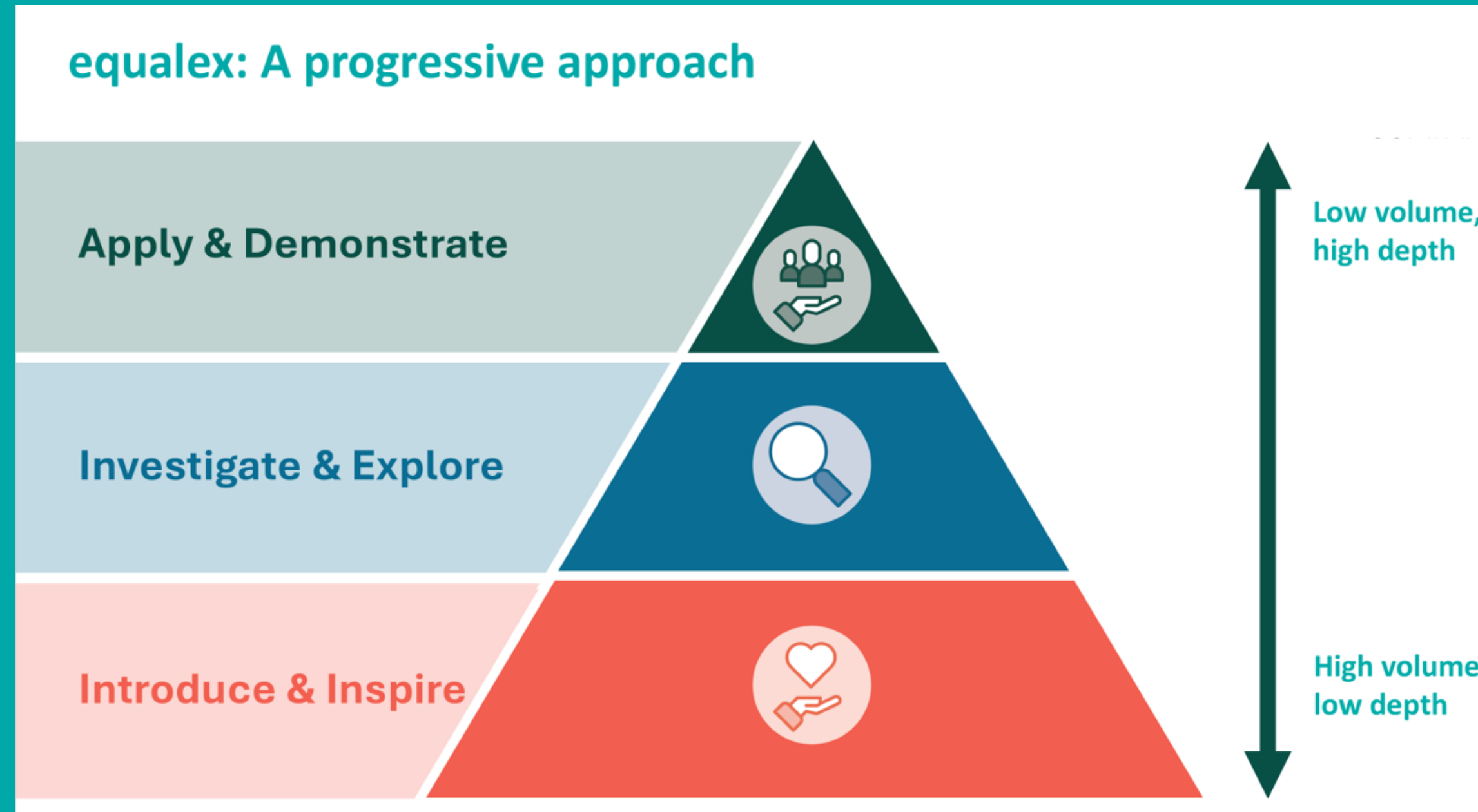
- Opportunities to build skills for independent living – time management, organisation, communication etc.
- Opportunities are tailored to meet need giving learners opportunity to practice independence at appropriate level
- Exposure to different living, working and lifestyle possibilities

Health

- Boosts self-esteem and confidence, reducing anxiety around work and adulthood
- Encourages resilience and problem-solving
- Progressive approach reinforces early development of self-awareness and confidence
- Helps young people understand healthy work habits, routines and environments

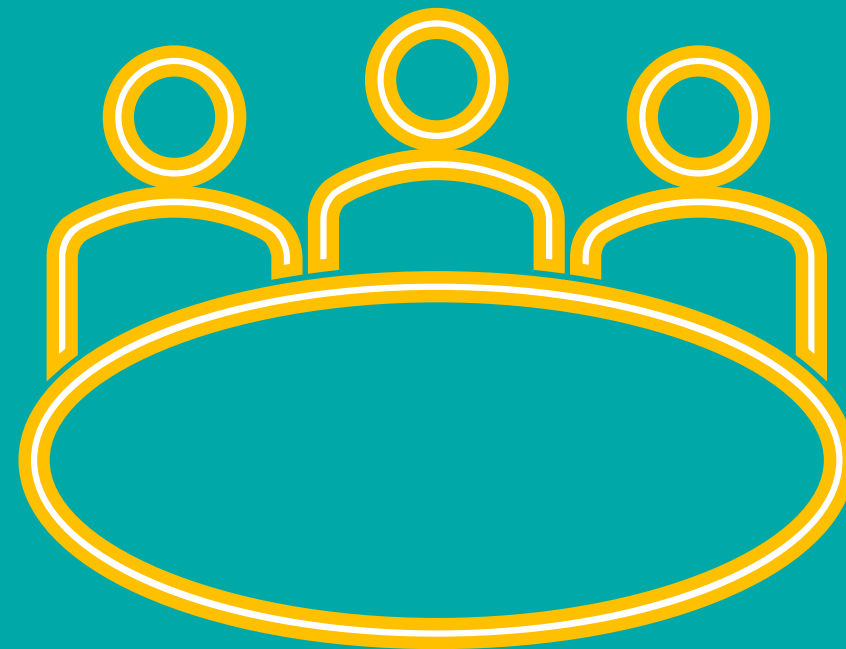
Key for SENCo to be collaborating with Careers Leader!

Building the Foundations



Making Modern Work Experience Work

For your work experience offer, what has your setting pivoted or changed this year? What has the impact been?



FE colleagues...

What additional changes can schools make to their work experience offer to support transition?

How can our careers community support schools and FE to better align so that modern work experience becomes a continuum?

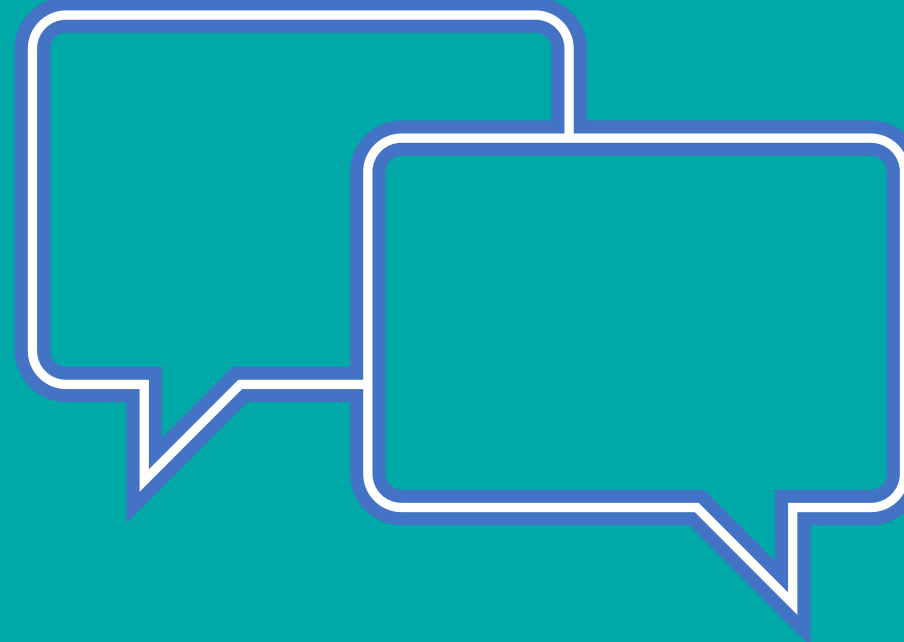


15 mins!

Group Feedback

South Midlands
CAREERS HUB

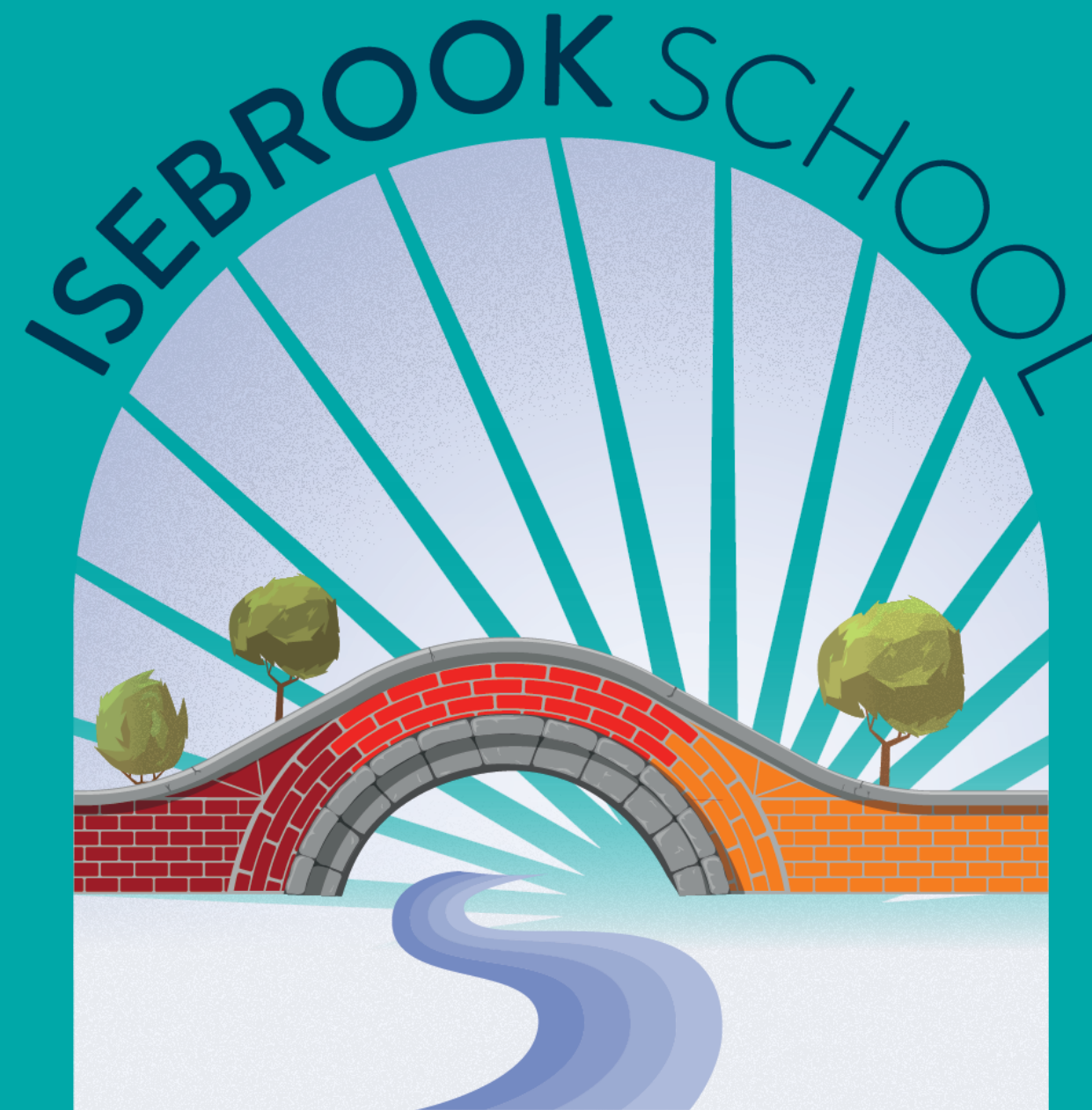
THE CAREERS &
ENTERPRISE
COMPANY



School Spotlight!

South Midlands
CAREERS HUB

THE CAREERS &
ENTERPRISE
COMPANY



Provider Spotlight

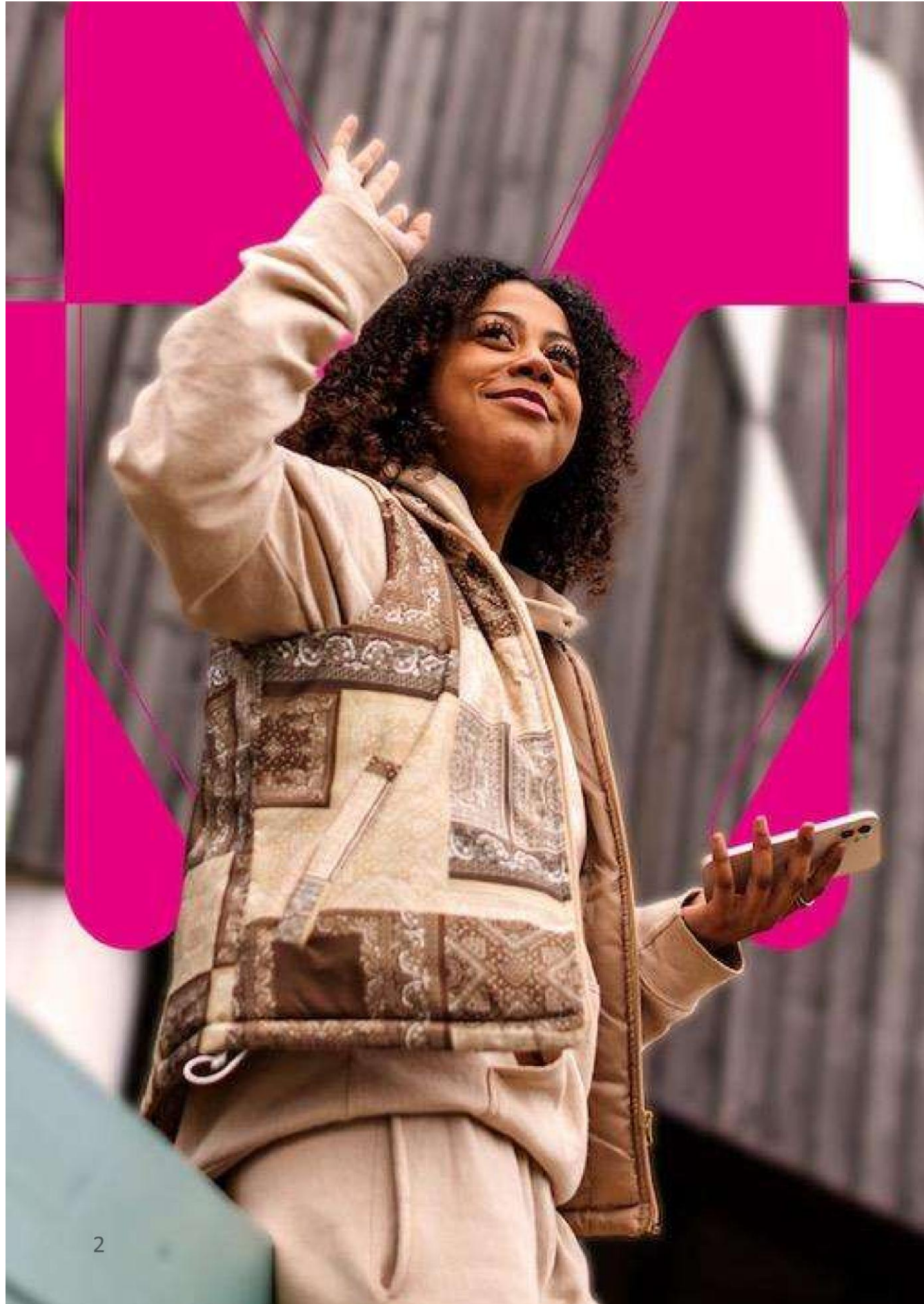
South Midlands
CAREERS HUB

THE CAREERS &
ENTERPRISE
COMPANY





**Additional Learning
Support at MK College**



Provisions

Autism Team

Exam Access Arrangements Team

SEND Support Coaches

TSA Team

Careers Team

EHCP Co-Ordinator

BSL Communicator

Additional Support from VI, HI and PI Specialist Teachers

Assistive Technology

Wellbeing and Behaviour Teams

Transition

Accessibility



Additional Needs

Social, Emotional, and Mental Health Needs

Autistic Spectrum Conditions

Specific Learning Difficulties (SPLD)

Hearing Impairment

Visual Impairment

Physical Disabilities/Mobility Needs

Medical Needs



ADDITIONAL LEARNING SUPPORT WEBPAGE

Scan the QR code below which will take you directly to our webpage. This shows all the additional needs we support, our ALS teams and the transition to college. There is also a section on 'meet the team' where you can put faces to names for our teams!



<https://mkcollege.ac.uk/student-info/additional-learning-support/>

YOUR TRANSITION TO COLLEGE!

We understand that transitioning into college from school can be a challenge. At Milton Keynes College, we're here to support you every step of the way.

We will work closely with your school and local council as part of a standard process. This ensures we can meet your needs and that your time here is positive for both you and others.

If you are accepted onto a course here at Milton Keynes College, you will then have a initial assessment with a member of the team. This isn't a test, but a meeting for us to better understand your needs and how we can support you here at college.



At Milton Keynes College we offer support and information so we can create more inclusive spaces.

Our team is dedicated to creating an LGBTQIA+ safe space, making spaces where every student feels welcomed and supported. Our lead Autism Specialist Mentor takes pride in serving as the Chair of the LGBTQIA+ Network here!



MILTON KEYNES COLLEGE SEND & ALS TEAM



FOR MORE INFO CONTACT,
INEEDSUPPORT@MKCOLLEGE.AC.UK
OR
01908 684155





Contact Details

ineedsupport@mkcollege.ac.uk

AOB

Summer CoP: Inclusion
Conference

REGISTRATIONS OPEN

Wednesday 1st July 9.30am –
2.30pm

King's House, Bedford

South Midlands
CAREERS HUB

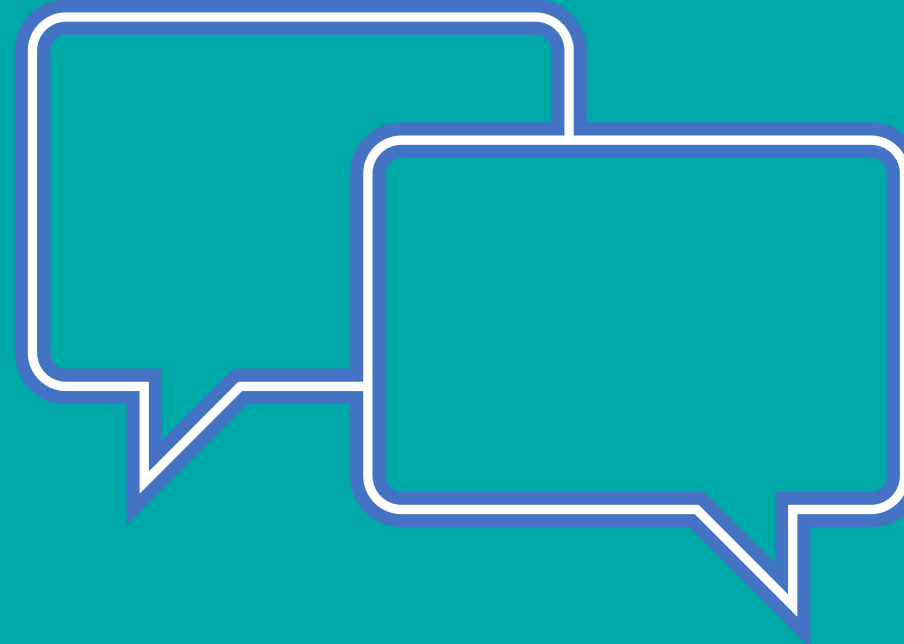
THE CAREERS &
ENTERPRISE
COMPANY



Thank you for attending

South Midlands
CAREERS HUB

THE CAREERS &
ENTERPRISE
COMPANY



Question and Discussion