

DHL SUPPLY CHAIN

AN INTRODUCTION



NEXT GENERATION TALENT



Group

Post & Parcel Germany

Express

Global Forwarding,
Freight

Supply Chain

eCommerce

Deutsche Post 





EXPRESS

Transport of urgent documents and goods, primarily as time-definite international shipments



GLOBAL FORWARDING, FREIGHT

International forwarding services for air, ocean and overland freight



SUPPLY CHAIN

Tailor-made logistics services and supply chain solutions based on globally standardized modules such as warehousing, transport and value-added services



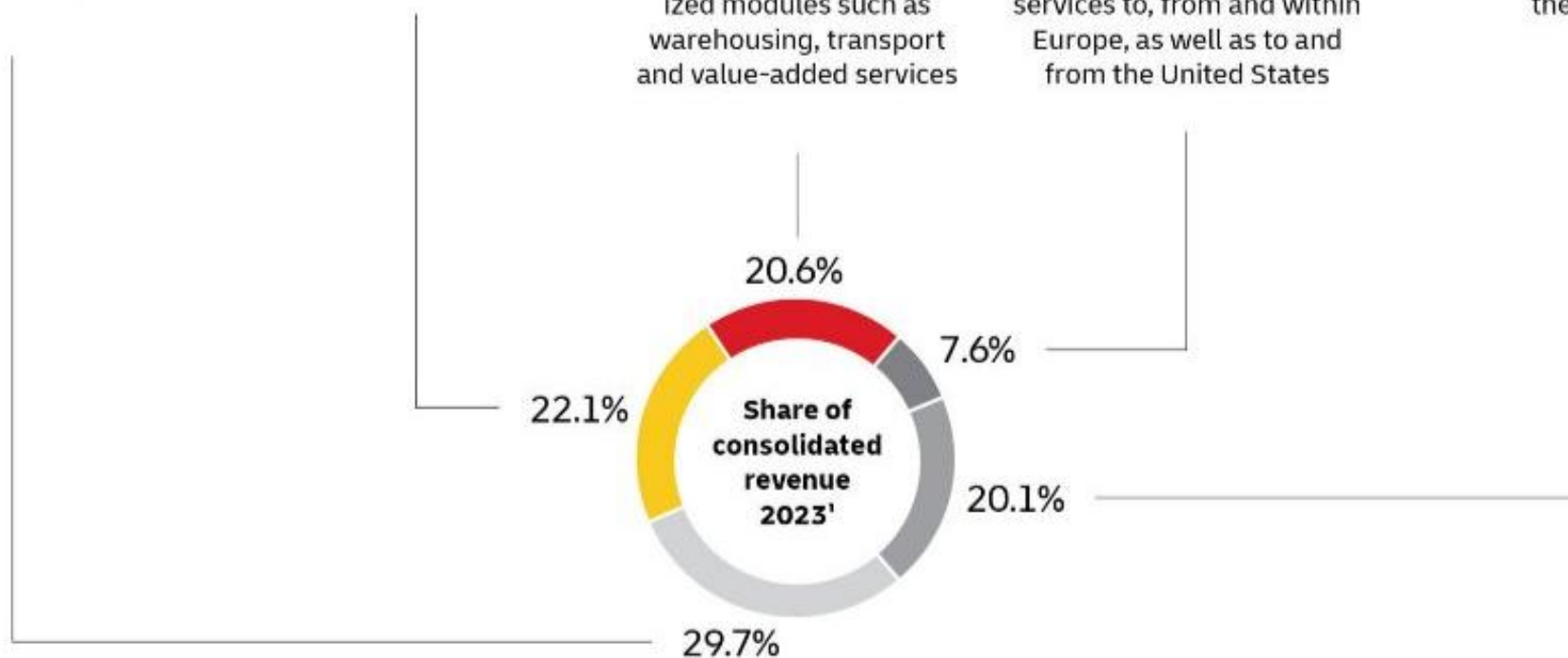
ECOMMERCE

Domestic parcel transport in selected countries in Europe, the USA and Asia. Deferred cross-border services to, from and within Europe, as well as to and from the United States



POST & PARCEL GERMANY

Transporting, sorting and delivering documents and goods in Germany and export to the rest of the world



DHL SUPPLY CHAIN

DID YOU KNOW?







DHL SUPPLY CHAIN

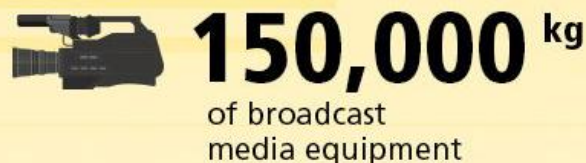
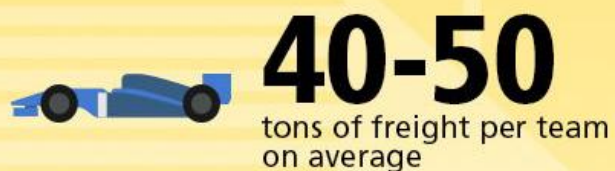
DID YOU KNOW?



- 10 TEAMS
- 20 DRIVERS
- 21 RACES
- 5 CONTINENTS
- 9 MONTHS



As Official Logistics Partner of Formula 1, DHL draws on over 35 years' experience handling complex, time-critical, international motorsports logistics. Formula 1 freight travels by land, air and sea to 5 continents in 9 months, requiring detailed planning of complex global routing to ensure reliable delivery for the start of the race.



NEXT GENERATION TALENT ROLES



Apprenticeship Programmes Available in:

- Supply Chain Operations
- Digital and Technology
- Finance
- HR
- Project Management
- Operational Excellence
- Business Development

*ROLES AVAILABLE ARE SUBJECT TO
BUSINESS DEMAND*

LEVEL 3-6



Application Process

Online Application Form

CV, basic info,
Right To Work

Online Gamification

Less than 1 hour to
complete

In-Person Assessment Centre

Group task
Interview

Interview Tips

1

Research the company

And the industry that your role sits in e.g. Finance

2

Practice common questions

Think of examples of where you can demonstrate relevant skills for the role

3

Dress appropriately

Smart business wear or smart casual is normally the best approach

4

Show enthusiasm

Catch-up on current affairs in the industry, send a follow up thank you email, smile and maintain good body posture

5

Ask lots of questions

You can pre-prepare these and write them down, it helps to show you're keen!

Programme Structure:

- Line manager with apprentice track record
- Quarterly check-ins with Support Manager (always available)
- Support from apprenticeship provider
- Work 4 day week and 1 day dedicated to apprenticeship
- Networking events and days out
- End of year celebrations and internal awards
- Internal free development courses e.g. 3-day Management Course & 2-day Presenting with Impact





**Programmes
go live
October 2026
for
September
2027 start**

DHL SUPPLY CHAIN

Q&A &
REGISTER YOUR INTEREST

