

# NHS/Health & Social Care Apprenticeships and T Levels



## Jason Gosling – Employment Pathways Project Manager



## During this session you will:

- Learn facts and myths in relation to working in the NHS/Health & Social Care
- Gain insight into the 350+ different careers in the NHS/Health & Social Care
- Learn about the variety of opportunities from community support to hospital settings to Admin, IT and Facilities
- Learn about Apprenticeships and T Levels
- How to apply and apply with quality



# NHS/Health & Social Care



# Working in Health & Social Care

## Fact 1

- **The NHS is the largest employer in the UK!**

# Working in Health & Social Care

## Fact 2

- **There are around 25,000 NHS vacancies being advertised per month!**
- A lot of these are Apprenticeships!

# Working in Health & Social Care

## Fact 3

- **You don't need to go to University to work in the NHS!**
- Only about 50% of the NHS workforce have a university or other professional qualification and there are now lots of pathways into an NHS/Health & Social Care career

# Working in Health & Social Care

## Fact 4

- **The NHS is also one of the world's largest employers!**
- As of January 2025, it employed 1.37 million full-time equivalent (FTE) staff in England alone

# Working in Health & Social Care

## Fact 5

- **Social Care is an even larger employer!**
- In the last figures released, 1.59 million FTE were employed in Social Care in England!

# Working in Health & Social Care

## Myth 1

- **The NHS is one big organisation!**
- It is made up of hundreds of different organisations of differing sizes e.g. there are about 6,200 active GP practices and over 200 NHS trusts running hospitals, health facilities and services

# Working in Health & Social Care

## Myth 2

### **The NHS is just Hospitals!**

GP/Primary Care

Dentists

Pharmacies

Hospital/Urgent care services

Mental health services

NHS sight tests

Sexual health services

Pregnancy services

Addiction services

Independent living services

# Working in Health & Social Care

## Myth 3

- **Jobs in the NHS are all doctors and nurses!**
- Fewer than half the NHS workforce are doctors and nurses
- The NHS has more than 350 different careers on offer, so there is a job for you, no matter what your interests, skills or qualifications are
- Roles, such as ambulance support staff, healthcare scientists, healthcare support workers, I.T. specialists, data analysts, administrators, accountants, catering, gardening, plumbing...the list goes on...

# Working in Health & Social Care

## Myth 4

- **The NHS/Health & Social Care doesn't offer career progression!**
- Lots of people don't realise this, but you can also gain qualifications by studying and working within roles at the same time
- For example, you can join as a Healthcare Support Worker, then train to become a Nursing Associate, then train to become something like a Nurse, Paramedic, Physiotherapist or Occupational Therapist
- Qualifications are also available to NHS staff as part of continuous professional development

# Working in Health & Social Care

## Myth 5

- **The pay is poor!**
- The basic starting salary for an entry level role is £25,272 (bottom of band 2)
- Non-pay benefits include:
  - ✓ Continuing learning & development
  - ✓ 37.5 hours working week or flexible working
  - ✓ Competitive pension & holidays
  - ✓ NHS staff discounts & childcare vouchers when applicable

# Working in Health & Social Care

## The Biggest Myth

- **The NHS doesn't employ people like me!**
- The NHS is always looking for new and passionate staff from every walk of life to join the team
- Many of the roles in the NHS benefit from people having lived experience elsewhere
- So, get thinking about how your current skills might be transferable to an NHS role and what lived experience you bring that will improve NHS/Health & Social Care services for others

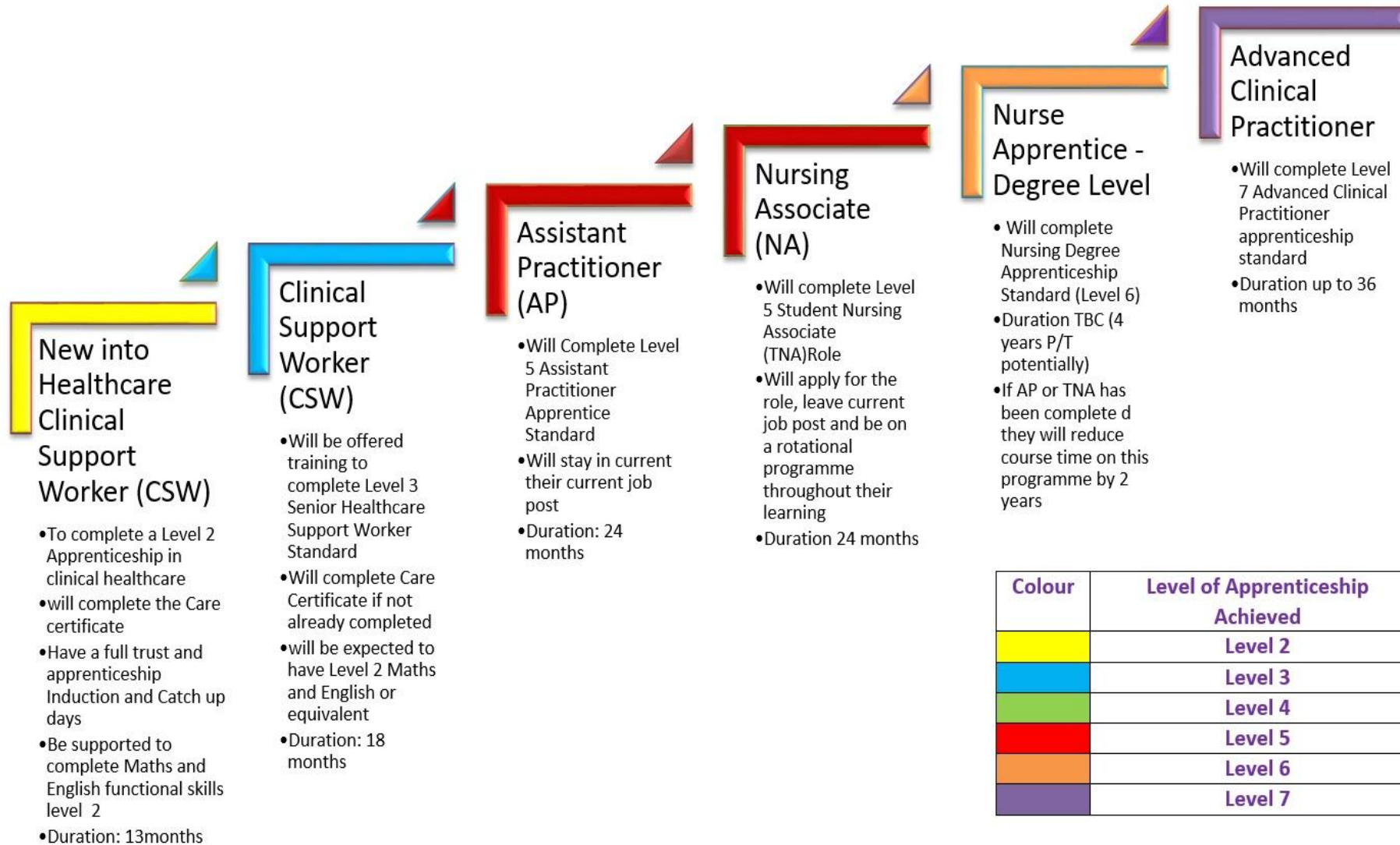
# Apprenticeships

- Apprenticeships take between one and five years to complete
- Anyone over the age of 16 can do one
- Over a week, you're likely to spend the equivalent of four days on work placement and one day at a training centre or college
- You'll develop your skills, including English and Maths
- You'll gain a competence qualification (based on what you can do in the workplace) and a knowledge qualification, or a qualification combining both
- Many NHS employers will pay you more than the minimum wage

# T Levels

- You'll spend 80% of your time in the classroom and 20% on a 45-day placement with an employer to give you the skills and knowledge companies look for
- Your industry placement gives you the chance to learn what a real career is like while you continue your studies
- T Level Foundation Year is a 1-year post-GCSE study programme designed to prepare you for your chosen T Level
- It will enable you to develop your English and maths, practical, technical and study skills, and provide work experience to help you excel in your T Level
- Like A levels, there are no tuition fees to study these if you start before you are 19

# NHS Steps To Success



# NHS Steps To Success

## Customer Service Administration Apprentice

- To complete a Level 2 Apprenticeship in customer Service
- Have a full trust and apprenticeship Induction and support from the organisations apprenticeship team
- Be supported to complete Maths and English functional skills level 2
- Duration: 15 months

## Administration Assistant

- Will be offered training to complete Level 3 Business Administration Apprenticeship
- May be expected to attend 1 day a week at college
- Will be expected to have Level 2 Maths and English or equivalent
- Duration: 18 months

## Project support Officer

- Will Complete Level 4 Associate Project Manager Apprentice Standard
- Apprentice may have applied for a new role or have had a development need identified within their current role
- Duration: 24 months

## Departmental Lead

- Will complete Level 5 HR consultant/Partner apprenticeship
- Will apply for the role within a department or have had a development need identified within their current role to progress
- Duration 36 months

## Department Manager

- Will complete a Degree Apprenticeship Standard in chartered Management at Level 6
- Can be accessed straight from completing a level 3 or 4 apprenticeship
- Duration up to 48 months
- May include 1 day a week attending a university chosen by your organisation

## Senior Managers

- Will complete Level 7 Senior leader apprenticeship standard
- Is aimed at leader who have senior management responsibility
- Duration up to 24 months

# How do you apply?

Apprenticeships are advertised year-round:

[Apply on NHS Jobs](#)

[Find an apprenticeship - GOV.UK](#)

Apply for T Levels February-June

[Health | T Levels](#)

# Why do you need to apply with quality?

- Getting the job you want has never been more difficult
- Many NHS jobs now receive more than 100 applications - making competition fierce for roles at every level
- Applying with quality for an NHS job is not easy
- Personal/supporting statements are key for gaining an interview
- This is the part of the application where you can show your passion for the role, the values you have that make you ideal and the reasons why you stand out against the many other applicants who have applied

# What makes a...

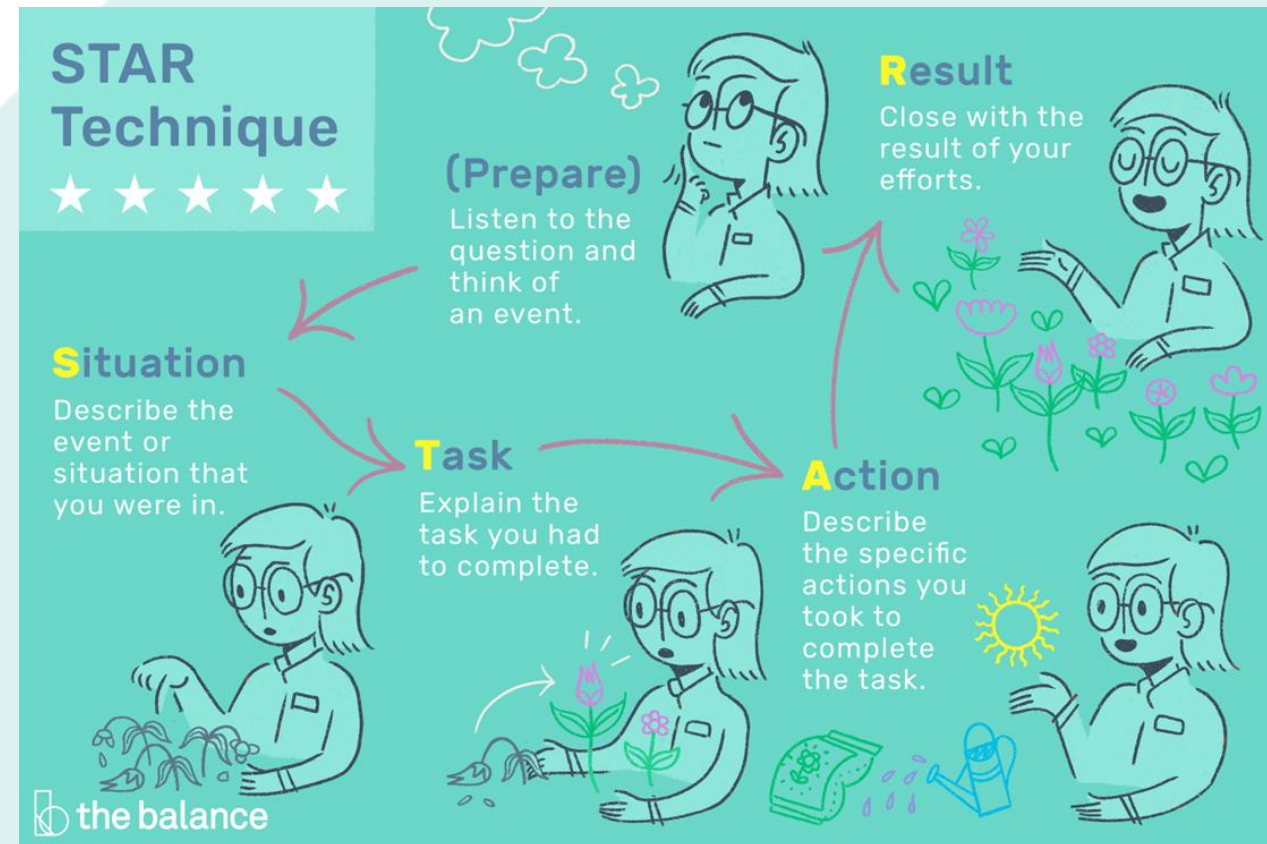
Good  
supporting  
statement

Poor  
supporting  
statement

# STAR Technique

STAR is the perfect tool to help you write a good supporting statement and answer interview questions well!

It's basically storytelling!  
Instead of "Once upon a time...", you start "Whilst doing work experience at..."



# Do

- **Do** make sure your supporting statement clearly shows how you meet every part of the person specification
- **Do** work through each section of the “essential” and “desirable” elements of the person specification and check your statement demonstrates how you meet each criteria
- **Do** include lots of examples that utilise the STAR Technique
- **Do** make sure these utilise any volunteering, charity work, hobbies, clubs or groups you have been part of and your lived experience e.g. caring for a relative, etc.
- **Do** properly check and proof-read your statement
- **Do** get someone else to check your statement before you submit it

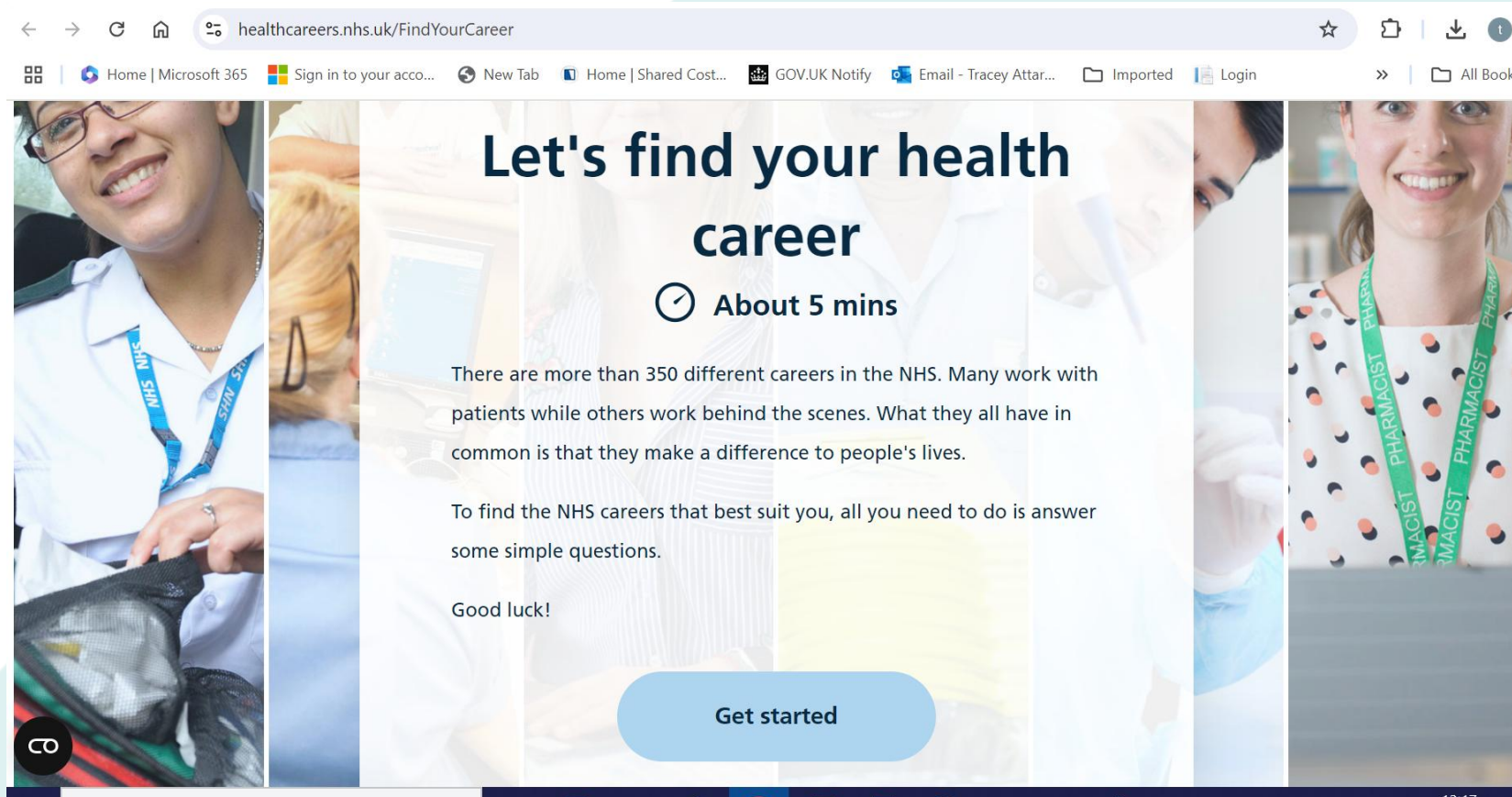
# Don't

- **Don't rely on AI to write your personal/supporting statement**
- AI-generated supporting statements are easy to spot
- AI-generated statements tended to be vague on detail, formulaic in structure and full of cliched expressions
- Some managers estimated up to 80% of the applications they saw were obviously constructed using AI

# Is working in the NHS right for me?

There are over 350 different roles in the NHS

<https://www.healthcareers.nhs.uk/FindYourCareer>



The screenshot shows a web browser window with the URL [healthcareers.nhs.uk/FindYourCareer](https://www.healthcareers.nhs.uk/FindYourCareer). The browser's address bar and tabs are visible at the top. The main content area features a large banner with the text "Let's find your health career" and "About 5 mins" next to a clock icon. Below this, there is a paragraph: "There are more than 350 different careers in the NHS. Many work with patients while others work behind the scenes. What they all have in common is that they make a difference to people's lives." Another paragraph follows: "To find the NHS careers that best suit you, all you need to do is answer some simple questions." Below that is the text "Good luck!". At the bottom of the banner is a blue button labeled "Get started". The banner is flanked by images of NHS staff: a woman in a white lab coat on the left and a woman in a polka-dot top with a green lanyard on the right. A small "9" icon is in the bottom left corner of the banner area, and "13:17" is in the bottom right corner.

healthcareers.nhs.uk/FindYourCareer

Home | Microsoft 365 | Sign in to your acco... | New Tab | Home | Shared Cost... | GOV.UK Notify | Email - Tracey Attar... | Imported | Login

## Let's find your health career

🕒 About 5 mins

There are more than 350 different careers in the NHS. Many work with patients while others work behind the scenes. What they all have in common is that they make a difference to people's lives.

To find the NHS careers that best suit you, all you need to do is answer some simple questions.

Good luck!

[Get started](#)

9

13:17

# Is working in Social Care right for me?

## A Question of Care



A QUESTION  
OF CARE

A career for you?

# Everyone loves an app!

 Bedfordshire, Luton  
and Milton Keynes  
Health and Care Partnership



Bedfordshire, Luton  
and Milton Keynes  
Integrated Care Board



Setting up **Candidates**  
for **Success**

BLMK Employment HUB

Get expert advice from  
our healthcare professionals

**TO FIND  
OUT MORE  
DOWNLOAD  
OUR APP**

GET IT ON  
Google Play



Download on the  
App Store



**Any Questions?**

**Email:**

**[jason.gosling1@nhs.net](mailto:jason.gosling1@nhs.net)**

**Website:**

**[work-learn-live-Employment Hub](#)**

